



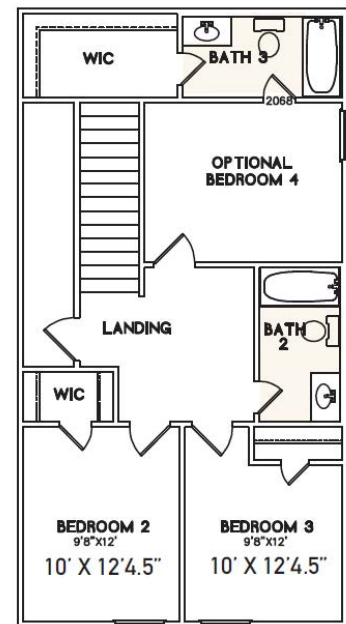
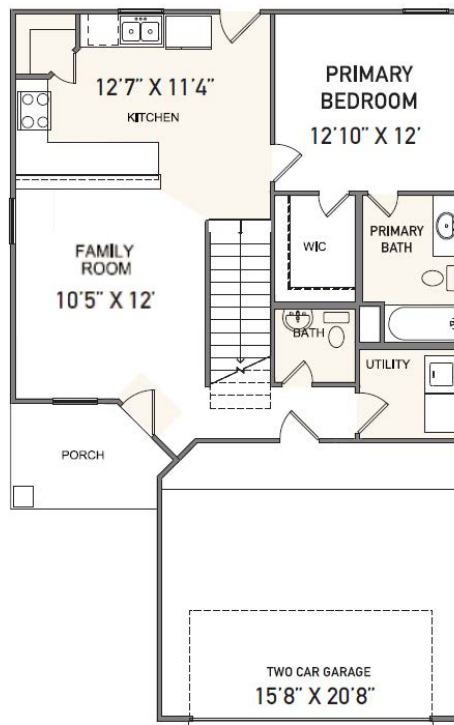
**ASGi HOMES**  
inspirational · ideal · individual

# Jeremy

PLAN 1600



- 1600 sq. ft.
- 4 Bedrooms
- 2 Full Baths
- 1 Half Bath
- Utility Room
- Large Living/  
Family Room
- Gourmet  
U-Shaped Kitchen
- Pantry
- Backyard Facing  
Primary Suite
- Front Porch
- 2-Car Garage



ASGiHOMES.com

Let's get Social



©June, 2021 ASGi Homes. All rights reserved. Specifications are subject to change without notice. Elevations may vary. Square footages and room sizes area approximate. All information (including, but not limited to prices, availability, incentives, floor plans, site plans, features, standards and options, assessments and fees, planned amenities, programs, conceptual artists' renderings and community development plans) is not guaranteed and remains subject to change or delay without notice. Maps and plans are not to scale and all dimensions are approximate. Please see an ASGi Homes sales associate for details.6/21

