



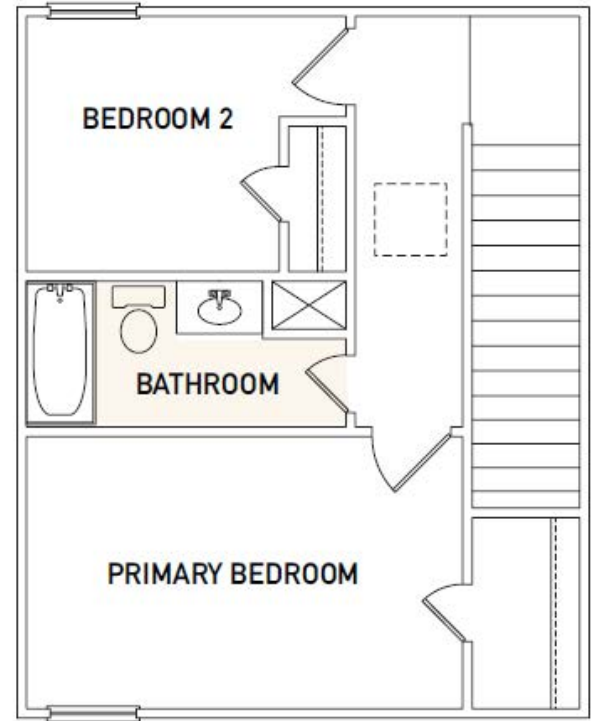
ASGi HOMES
inspirational · ideal · individual

Kyleigh

PLAN 917



- 917 sq. ft.
- 2 Bedrooms
- 1 Full Bath
- 1 Half Bath
- Utility Closet
- Open-Concept
- Large Living/
Family Room
- Gourmet
Corner Kitchen
- All Bedrooms
Upstairs



ASGiHOMES.com

Let's get Social



©June, 2021 ASGi Homes. All rights reserved. Specifications are subject to change without notice. Elevations may vary. Square footages and room sizes are approximate. All information (including, but not limited to prices, availability, incentives, floor plans, site plans, features, standards and options, assessments and fees, planned amenities, programs, conceptual artists' renderings and community development plans) is not guaranteed and remains subject to change or delay without notice. Maps and plans are not to scale and all dimensions are approximate. Please see an ASGi Homes sales associate for details.6/21

