



**ASGi HOMES**  
inspirational · ideal · individual

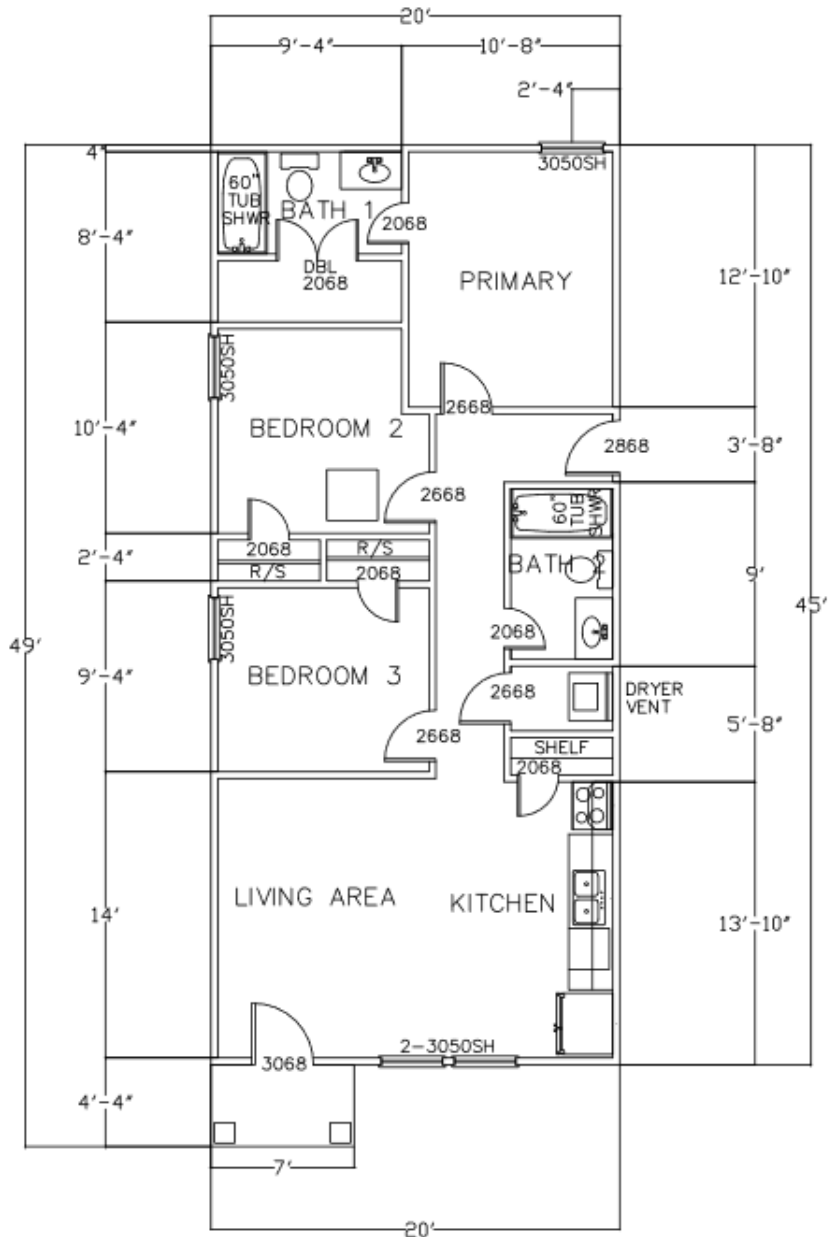
# Tiffany

PLAN 900



The Tiffany plan is a very smart and efficient home that features:

- 900 sq. ft.
- 3 Bedrooms
- 2 Full Baths
- Utility Room
- Open Concept
- Living/Family Room
- Gourmet Galley Kitchen
- Master Suite to the rear of home
- Front Porch Area



ASGiHOMES.com

Let's get Social



©July, 2020 ASGi Homes. All rights reserved. Specifications are subject to change without notice. Elevations may vary. Square footages and room sizes area approximate. All information (including, but not limited to prices, availability, incentives, floor plans, site plans, features, standards and options, assessments and fees, planned amenities, programs, conceptual artists' renderings and community development plans) is not guaranteed and remains subject to change or delay without notice. Maps and plans are not to scale and all dimensions are approximate. Please see an ASGi Homes sales associate for details. 7/20

